

# HUBER Belt Dryer BT for sewage sludge drying



Create value from waste!

! ! \$

! ! !

! " # ! ! % !

\$ ! \$ " ! ! ! " \$ ! # ! ! " !

**Sewage sludge is the "waste product" that is generated on sewage treatment plants. Dry your sewage sludge to reduce disposal costs and use your "waste" as a fuel or fertiliser resource!**

►► The HUBER Belt Dryer BT makes waste a valuable resource ...

**... in the most efficient way ...**

The unique HUBER HELIX air flow system ensures that only the minimum required amount of drying air is blown through the dryer by the ventilators. In combination with the CFD-optimised dryer geometry, an extremely low electrical energy demand is achieved with this air flow system.

The closed process air circulation system with integrated condensation stage reduces the exhaust air volume flow to 5,000 m<sup>3</sup>/h maximum and contributes to keeping down operating costs.



**... in the most reliable way ...**

The HUBER Belt Dryer BT is designed for fully automatic 24/7 operation. All its core components are robust and "made in Germany".

Integrated automatic belt cleaning and the HUBER pelletiser guarantee a reliable and failure-free dryer operation. High safety standards and low drying temperatures of 70 °C to 150 °C make the HUBER Belt Dryer BT so safe that all ATEX requirements are reliably met.

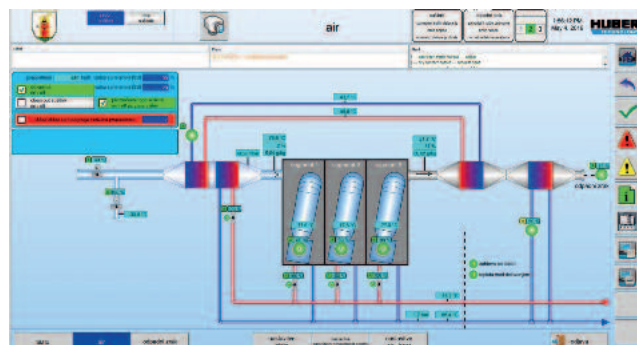


**... in the most comfortable way ...**

The electrical control system of the HUBER Belt Dryer BT responds fully automatically to external influences that could impair the complex drying process, eliminating the need for intervention by the operating staff.

The dryer can easily be cleaned and maintained by a single person.

Optional telemaintenance solutions are additionally available to enable system operators to monitor their drying plant from anywhere, or even control and operate it if required via an end device, such as PC, mobile phone or tablet PC.



### **... in the most sustainable way ...**

Consequent use of exhaust heat from processes, such as power generation from sewage gas or biogas, reduces operating costs and CO<sub>2</sub> emissions. Optional heat recovery from the dryer (to heat buildings or digesters)

also contributes to the sustainable protection of the environment. The dry granulate produced by the dryer can be used both as fuel and fertilizer.

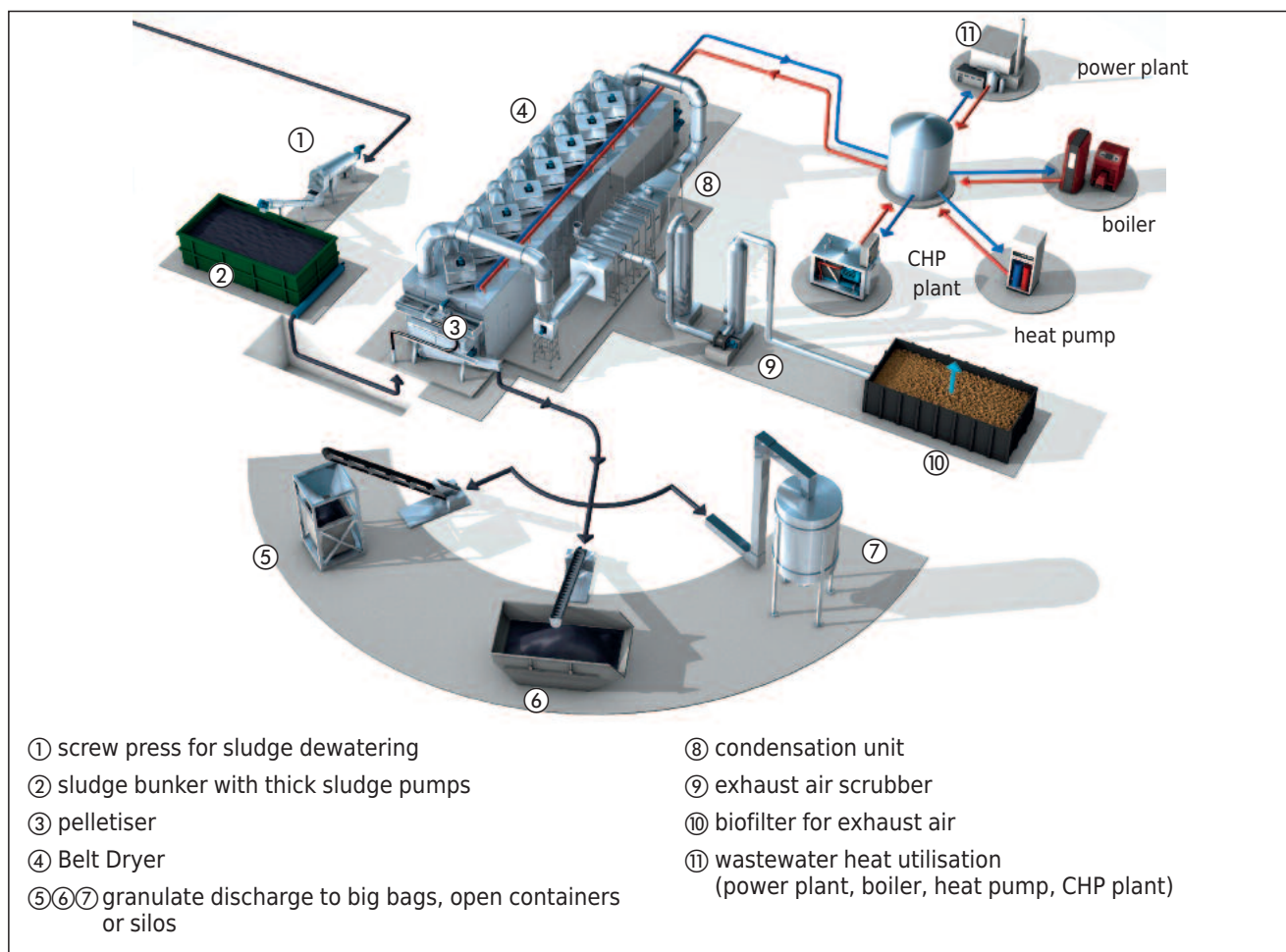
### **... in the most clever way ...**

The HUBER Belt Dryer BT represents state-of-the-art technology of sewage sludge drying. Maximum energy efficiency, full automation and flexible use of exhaust heat guarantee low operating costs and easy system operation. The dryer can also easily be integrated into existing installations and process plants. Various

components of peripheral plant equipment ensure maximum flexibility and can be selected to meet specific requirements.







Combined with HUBER dewatering systems (such as the RoS 3Q Screw Press) and the sludge2energy system, the HUBER Belt Dryer BT offers the customer a reliable complete solution for perfectly tailored sludge treatment.

The HUBER Belt Dryer BT has proven its reliability in many projects worldwide.

## ►► Technical data

**Capacity:**

0.3 to 6 t/h (> 6 t/h in multi-line installations)

**Thermal energy demand:**

0.8 to 0.85 kWh/kg water evaporation

**Electric energy demand:**

0.03 to 0.15 kWh/kg water evaporation

**Dryer sizes:**

4 to 30 m active dryer length

**Energy sources:**

Exhaust heat, steam, thermal oil, gas, oil, biogas, heat pump

## HUBER SE

Industriepark Erasbach A1 · D-92334 Berching  
Phone: + 49 - 84 62 - 201 - 0 · Fax: + 49 - 84 62 - 201 - 810  
info@huber.de · Internet: www.huber.de

Subject to technical modification  
0,00 / 8 - 2.2017 - 4.2008

HUBER Belt Dryer BT